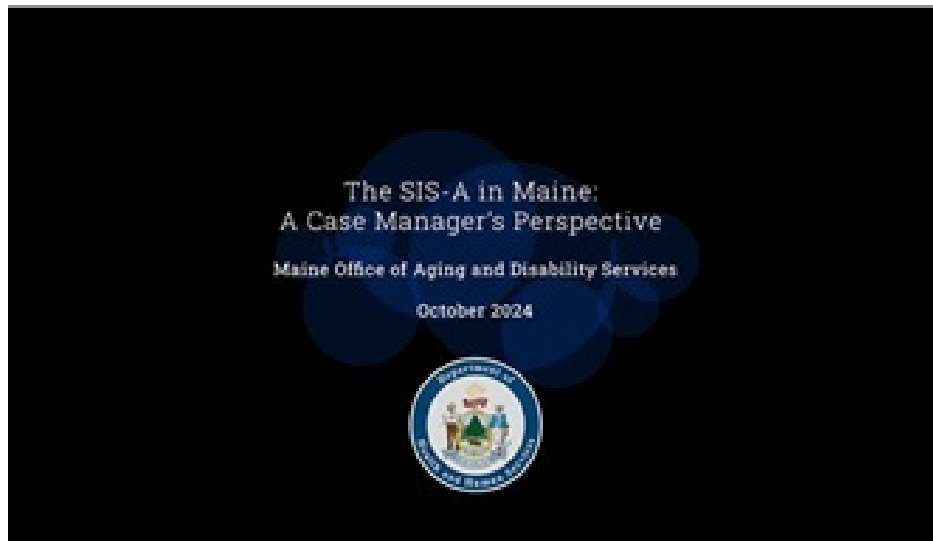


## Maine SIS Program

### Maine Supports Intensity Scale (SIS) Assessments:

Case Manager Shares SIS-A Experiences | Innovation Summit Registration is Now Open | Meet the Team: New SIS-A Coordinator, Lisa Pyburn | Reminders on How This Tool Can Inform Support Needs | Download Program Resources

Community Case Manager, Pauline Gendron, shares her experience with the SIS-A Assessment process.



Maine Community Case Manager, **Pauline Gendron** recently sat down with members of the OADS and Maximus teams for an insightful interview to learn more about her personal experiences with the SIS-A Assessment, including processes and the positive impact this tool has made in the long-term planning goals of her clients.

[Click here to watch the interview.](#)

OADS Announcement: Innovation Summit registration is now open!

DHHS and the Office of Aging and Disability Services presents *Innovation Summit: A Path for Maine*.

The *Innovation Summit: A Path for ME* will be held in Portland,

Maine, from **May 19 to May 20, 2025**, bringing together individuals, families, service providers, advocates, vendors, and professionals committed to enhancing the lives of people with intellectual and developmental disabilities, autism, brain injuries, or other similar conditions. This dynamic event promises two days of learning, networking, and community building, focused on improving access, services, and opportunities for individuals with disabilities.



- [Click here to review the March 4, 2025, OADS bulletin to learn more about conference activities and highlights.](#)
- [Click here to register.](#)

---

## Meet New SIS-A Coordinator, Lisa Pyburn.

For this edition of “Meet the Team”, we introduce you to Coordinator I – Clinical Assessments, **Lisa Pyburn**. In her role as a SIS-A Assessor, she contacts the Member, Case Manager, family members, guardians, and others to schedule the assessment. Lisa then meets with them for the assessment interview. Once completed, the results are sent to the Member’s Case Manager. The SIS-A results can help the Case Manager with Person-Centered Planning for the Member.



***Please share in a few sentences about your professional background/work history related to your current role:***

I have a background in Mental Health Case Management, Therapeutic Foster Care and a strong interest in the role that animals can play in helping humans to grow, learn and develop new skills. I have a BS in Mental Health and Human Services from the University of Maine – Augusta, as well as a graduate certificate in Substance Use Disorders from UMA.

***What area of the state do you service in your role?***

Southern Oxford County, Southern Cumberland County, and all of York County.

***What is your favorite part of the work you do?***

I like meeting new people and strive to make assessments as accurate as possible for each person I work with.

***Have you lived in other places besides Maine?***

I have called Maine home for more than half of my life. I have also previously lived in Massachusetts and Colorado.

---

## Resources: Learn more about the SIS-A assessment.

There are many resources available about the SIS-A. Several helpful links are located below, including recently updated Frequently Asked Questions (FAQs):

- [SIS-A Frequently Asked Questions \(FAQs\) for members, family and other support team members – updated 1.22.25](#)
- [SIS-A Frequently Asked Questions \(FAQs\) for community case managers \(CCMs\)](#)
- [A Path for ME Transition Planning Site](#)



- [OADS Website - "A Path for ME" Needs Assessments](#)
- [SIS-A Assessment Report - AAIDD Sample](#)
- [OADS Presentation - Orientation to "A Path for ME" Needs Assessment](#)
- [American Association on Intellectual and Developmental Disabilities \(AAIDD\) Website](#)

You can review this updated guide and other resources 24/7 on the [ME SIS-A Tools & Resources site](#).

---

## Q&A: How can the SIS-A inform support needs?

### **Q: What is the Supports Intensity Scale for Adults (SIS-A ®) 2nd Edition assessment?**

The SIS-A is an assessment tool developed and maintained by the American Association for Intellectual and Developmental Disabilities (AAIDD). The SIS-A provides high-quality data that helps inform the Person-Centered Planning process for the individual who takes it. It also provides State of Maine Department of Health and Human Services – Office of Aging and Disability Services (OADS) with support information for the design of innovative service options through the new Lifespan Waiver.



### **Q: How does the SIS-A measure support needs?**

The SIS-A assesses the support needs of people with IDD or autism. It has been in use since 2004. The SIS-A® focuses on what support a person needs to fully participate in community life. This includes taking care of personal needs, work activities or volunteering, housekeeping, maintaining relationships, and being an active part of their community. It also asks about a person's medical and behavioral support needs.

### **Q: How could the SIS-A assessment be beneficial for you?**

Information gathered during this free assessment and the conversations between the youth being assessed and their team will help identify the persons' support needs and allow for planning to achieve goals and desired outcomes. The assessments will also help OADS to create new service innovations that will support Mainers. These innovations are focused on different support needs through the new [Lifespan Waiver](#).

### **Q: Who should participate in the SIS-A assessment?**

It's preferred but not required that the person being assessed is present for the assessment. Accommodation can be made if the individual can only attend part of the assessment. It should also include two people who have known the person being assessed for at least 3 months and can accurately speak to the person's support needs in a variety of life areas. In addition to the person being assessed, attendees can be family members, friends, teachers, direct support, or staff from residential or day service providers. The case manager should also attend.

### **Q: Who performs the assessment?**

In order to have an objective and unbiased entity conducting the SIS-A, the State partners with Maximus Inc. to manage the administration of SIS-A assessment interviews in Maine. Each assessment is conducted by a trained SIS Assessor who has passed an approved AAIDD certification process. Assessors have experience working with individuals with IDD/autism and are knowledgeable on how to request and verify information from respondents.

---

Schedule a SIS-A with the SIS-A support team:



- Call – **833.771.4639**
  - Email – [Maine-SIS@maximus.com](mailto:Maine-SIS@maximus.com)
-