

## Illinois Colbert and Williams Consent Decrees Outreach and Transitional Assessment

Evaluators Have Begun Performing Outreach Visits | Register for Upcoming Webinars | Review On-Demand Training Materials and Implementation Next Steps

---

The State of Illinois Department of Healthcare and Family Services (HFS) and Maximus continue to make progress in the implementation of the new service, Colbert and Williams Consent Decree Outreach and Transitional Assessment. As shared in previous communications to Managed Care Organizations (MCOs) and Prime Agencies, this program is launching in a phased approach with two key process components.

- Maximus Evaluators began scheduling in-person **Outreach Visits** with Colbert Class Members in Cook County nursing facilities and Williams Class Members in SMHRF facilities on **December 1, 2024**. During these visits, Evaluators provide education on the person's rights and evaluate their level of interest in potential transition to the community.
- During the next phase, launching in **January 2025**, Evaluators will begin to conduct in-person **Transitional Assessments** with Colbert Class Members in Cook County nursing facilities and Williams Class Members in SMHRF facilities interested in transitioning to the community. Evaluators assess individuals' functional needs in several areas to determine the level of support necessary for successful community transition.

Help ensure that your team is ready to support the recent launch of Outreach Visits and the upcoming start of in-person Transitional Assessments. Below are details to register for upcoming webinars, an updated calendar of **implementation milestones**, a reminder to check your **browser compatibility with AssessmentPro**, and links to helpful **on-demand learning**.

---

### NEXT STEPS: Register for Upcoming Training Webinars



Anyone in your team who will be involved in Outreach and Transitional Assessment processes should attend two one-hour webinars planned for late January. One session will focus on **Understanding Assessment Findings** and another will cover basics on **Using AssessmentPro**, the online assessment management system.

Register for one of each session, choosing the date for each that works best with your schedule.

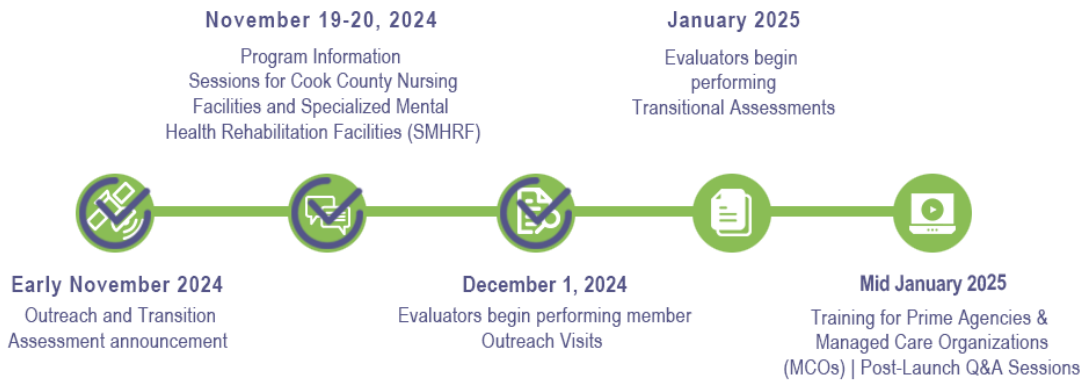
#### SESSION 1

- [Register for "Understanding Assessment Findings" | 2 p.m. CT Wednesday, January 22, 2025](#)
- OR
- [Register for "Understanding Assessment Findings" | 1 p.m. CT Tuesday, January 28, 2025](#)

#### SESSION 2

- [Register for “AssessmentPro Use” | 10 a.m. CT Thursday, January 23, 2025](#)  
OR
- [Register for “AssessmentPro Use” | 2 p.m. CT Wednesday, January 29, 2025](#)

## Colbert and Williams Consent Decrees Outreach and Transitional Assessment >> Progress Tracker



### RESOURCE REMINDER: Review On-Demand Outreach and Transitional Assessment Training Materials

If you missed the November Colbert and Williams Consent Decree Outreach and Transitional Assessment Information Sessions or would like to share details with others on your team, please review the helpful on-demand learning video and resource guide below.

- [Outreach and Transitional Assessment Information Session | Recording \(59:23 mins\)](#)
- [Outreach and Transitional Assessment Information Session | Slides](#)

## ASSESSMENTPRO: Confirm Browser Compatibility for Account Setup

The Maximus assessment management system, **AssessmentPro** will be critical to your new role in supporting Outreach and Transitional Assessment processes. During the January training webinars noted above, attendees will walk through the process of choosing the right user role(s), registering to create your account, and the Outreach and Transitional Assessment-related activities you'll need to perform in the system.

Ahead of these sessions, take an important first step in the setup of your AssessmentPro account by checking the compatibility of your browser. To ensure optimum system performance and maintain HIPAA-compliant data security standards, the AssessmentPro system supports the two most recent versions of Microsoft Edge and Google Chrome. If you don't have the right browser, contact your IT Department for





## SUPPORT: Contact the Maximus - Illinois Help Desk

A dedicated email account is now available for the Outreach and Transitional Assessment support. The Maximus – Illinois Help Desk team is available to answer any process or system-related questions from 8:00 a.m. to 8:00 p.m. CST, Sunday – Saturday.

- Outreach and Transitional Assessment assistance: [ILOA@maximus.com](mailto:ILOA@maximus.com)
- General Help Desk Assistance: [ILHelpDesk@maximus.com](mailto:ILHelpDesk@maximus.com)
- Phone: **833.727.7745**
- Outreach and Transitional Assessment Tools and Resources page: [https://maximusclinicalservices.com/svcs/illinois\\_oa](https://maximusclinicalservices.com/svcs/illinois_oa)



**HFS**

Illinois Department of  
Healthcare and Family Services

---