

Illinois Colbert and Williams Consent Decrees Outreach and Transitional Assessment

Evaluators Began Performing Transitional Assessments on January 9 | Register for AssessmentPro Training Webinars | Review Program Resources and Reminders

As of January 9, 2025, Maximus Outreach and Assessment Evaluators have begun to conduct in-person **Transitional Assessments** with Williams Class. Maximus Outreach and Assessment Evaluators began conducting in-person **Transitional Assessments** on January 9, 2025. Transitional Assessments are being provided to Williams Class Members in Specialized Mental Health Rehabilitation Facilities (SMHRFs) and Colbert Class Members in Cook County nursing facilities (CCNFs). These assessments are provided to Class Members who have indicated an interest in transitioning to a community setting. Evaluators assess individuals' functional needs in several areas to determine the level of support necessary for successful community transition.

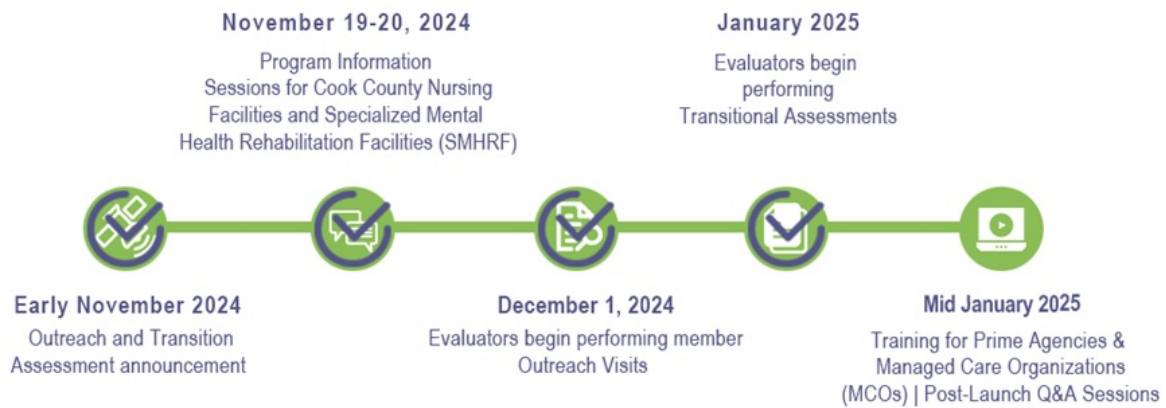
The launch of transitional assessments follows the December 2024 kick-off of Maximus conducting in-person **Outreach Visits** with Williams and Colbert Class Members.

Outreach and assessment are critical components of the state's work to ensure that individuals can choose to receive care in the setting of their choice. The Department of Healthcare and Family Services (HFS) and Maximus extend their thanks to Managed Care Organizations (MCOs) and Prime Agencies for your partnership and support in launching centralized outreach and assessment services.

Is your team ready to support these new processes? Register for the upcoming learning sessions and review the helpful service resources noted below:

- Updated **calendar** of milestone dates
- Registration details for **Transitional Assessment Findings** and **AssessmentPro** webinars
- **FAQs guide** and on-demand training resources
- **AssessmentPro – browser compatibility**
- **Help Desk** support

Share this communication with others on your team who will also be involved with Outreach and Transitional Assessment processes.



REGISTER: AssessmentPro and Summary Report Training Sessions



As shared in a previous communication, anyone in your team who will be involved in Outreach and Transitional Assessment processes should plan to attend two one-hour webinars planned for later this month. One session will focus on **Understanding Assessment Findings** and another will cover basics on **Using AssessmentPro**, the online assessment management platform. Register for one of each session, choosing the dates for each that work best with your schedule.

WEBINAR 1

- [Register for “Understanding Assessment Findings” | 2 p.m. CT Wednesday, January 22, 2025](#)
- [Register for “Understanding Assessment Findings” | 1 p.m. CT Tuesday, January 28, 2025](#)

WEBINAR 2

- [Register for “AssessmentPro Use” | 10 a.m. CT Thursday, January 23, 2025](#)
- [Register for “AssessmentPro Use” | 2 p.m. CT Wednesday, January 29, 2025](#)



RESOURCES: Review Outreach and Transitional Assessment FAQs Guide and On-Demand Training Materials

A series of frequently asked questions (FAQs) have been gathered into a guide covering program basics. Download the file linked below to review these helpful tips and reminders.

- [Williams and Colbert Decrees Outreach and Transitional Assessment FAQs Guide](#)

If you missed the November Williams and Colbert Consent Decrees Outreach and Transitional Assessment Information Sessions or would like to share details with others on your team, please review the helpful on-demand learning video and resource guide below.

- [Outreach and Transitional Assessment Information Session | Recording \(59:23 mins\)](#)
- [Outreach and Transitional Assessment Information Session | Slides](#)

REMINDER: Confirm AssessmentPro – Browser Compability



The Maximus assessment management system, **AssessmentPro** will be critical to your new role in supporting Outreach and Transitional Assessment processes. During the webinars noted above, attendees will walk through the process of choosing the right user role(s), registering to create your account, and the Outreach and Transitional Assessment-related activities you'll need to perform in the system.

Ahead of these sessions, take an important first step in the setup of your AssessmentPro account by checking the compatibility of your browser. To ensure optimum system performance and maintain HIPAA-compliant data security standards, the AssessmentPro system supports the two most recent versions of Microsoft Edge and Google Chrome. If you don't have the right browser, contact your IT Department for assistance.



SUPPORT: Contact the Maximus - Illinois Help Desk

The Maximus – Illinois Help Desk team is available to answer any process or system-related questions from 8:00 a.m. to 8:00 p.m. CST, Sunday – Saturday.

- Outreach and Transitional Assessment assistance: ILOA@maximus.com
- General Help Desk Assistance: ILHelpDesk@maximus.com
- Phone: **833.727.7745**
- Outreach and Transitional Assessment Tools and Resources page : https://maximusclinicalservices.com/svcs/illinois_oa



HFS

Illinois Department of
Healthcare and Family Services