

## Illinois Colbert and Williams Consent Decrees Outreach and Transitional Assessment

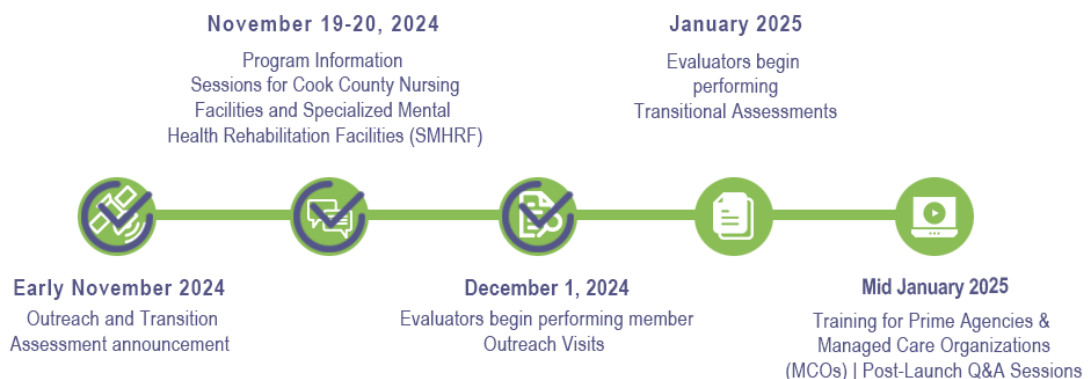
### Evaluators Have Begun Performing Outreach Visits | Review Best Practice Tip and On-Demand Training Materials

The State of Illinois Department of Healthcare and Family Services (HFS) and Maximus continue to make progress in the implementation of the new service, **Colbert and Williams Consent Decree Outreach and Transitional Assessment**. As shared in previous communications to Cook County Nursing Facilities and Specialized Mental Health Rehabilitation Facilities (SMHRF), this program is launching in a phased approach with two key process components.

- Maximus Evaluators began scheduling in-person **Outreach Visits** with Colbert Class Members in Cook County nursing facilities and Williams Class Members and SMHRF facilities on **December 1, 2024**. During these visits, Evaluators provide education on the person's rights and evaluate their level of interest in potential transition to the community.
- During the next phase, launching in **January 2025**, Evaluators will begin to conduct in-person **Transitional Assessments** with Colbert Class Members in Cook County nursing facilities and Williams Class Members in SMHRF facilities interested in transitioning to the community. Evaluators assess individuals' functional needs in several areas to determine the level of support necessary for successful community transition.

Help ensure that your team is ready to support Outreach Visits to your facility and the upcoming launch of in-person Transitional Assessments. Below is an updated calendar of **implementation milestones**, an important reminder to **keep PathTracker up to date**, and links to **on-demand training** from the information sessions held in November. We appreciate your partnership in this new program, which will aid in the identification of individuals interested in community transition and make sure the levels of support they'll need are accurately identified.

### Colbert and Williams Consent Decrees Outreach and Transitional Assessment >> Progress Tracker





## PROCESS TIP: Always Keep Your PathTracker Data Up to Date

Be sure to keep your AssessmentPro – PathTracker up to date. PathTracker is the official census for Illinois facilities. An IDPH or HFS Official can check PathTracker at any point to see who is in each facility. It's critical to keep this updated, as any PathTracker data that is not current means that your facility is technically out of compliance.

---

## RESOURCE REMINDER: Review On-Demand Information Session



If you missed the November Colbert and Williams Consent Decree Outreach and Transitional Assessment Information Sessions or would like to share details with others on your team, please review the helpful on-demand learning video and resource guide below.

For those who missed this week's Colbert and Williams Consent Decrees Outreach and Transitional Assessment Information Sessions or would like to share details with others on your team, please review the helpful on-demand learning video and resource guide below.

- [Outreach and Transitional Assessment Information Session | Recording \(59:23 mins\)](#)
- [Outreach and Transitional Assessment Information Session | Slides](#)



---

## SUPPORT: Contact the Maximus - Illinois Help Desk

A dedicated email account is now available for the Outreach and Transitional Assessment support. The Maximus – Illinois Help Desk team is available to answer any process or system-related questions from 8:00 a.m. to 8:00 p.m. CST, Sunday – Saturday.

- Outreach and Transitional Assessment assistance: [ILOA@maximus.com](mailto:ILOA@maximus.com)
- General Help Desk assistance: [ILHelpDesk@maximus.com](mailto:ILHelpDesk@maximus.com)
- Phone: 833.727.7745
- Outreach and Transitional Assessment Tools and Resources: [https://maximusclinicalservices.com/svcs/illinois\\_oa](https://maximusclinicalservices.com/svcs/illinois_oa)



**HFS**

Illinois Department of  
Healthcare and Family Services

---