



Illinois Colbert and Williams Consent Decrees Outreach and Transitional Assessment

Prepare for Program Implementation – Review New On-Demand Training Materials and Additional Resources

An important reminder for Specialized Mental Health Rehabilitation Facilities (SMHRFs) Owners and Operators that the State of Illinois Department of Healthcare and Family Services (HFS) has recently contracted with partner Maximus to provide outreach and assessment services for **Colbert and Williams Class Members**. There are two key components to this program.

- In-person **Outreach Visits** by Maximus Evaluators will be scheduled with Colbert Consent Decree Class Members in Cook County skilled nursing facilities and Williams Consent Decree Class Members residing in SMHRFs statewide. During these visits, Evaluators will provide education on the person's rights and evaluate their level of interest in potential transition to the community.
- Evaluators then conduct in-person **Transitional Assessments** with Williams Consent Decree Class Members residing in SMHRFs and Colbert Consent Decree Class Members residing in Cook County nursing facilities who are interested in transitioning to the community. Evaluators assess individuals' functional needs in several areas to determine the level of support necessary for successful community transition.

This transition is scheduled for a phased launch. Evaluators will begin performing Outreach visits to members starting on **December 1, 2024**. Scheduling and performing Transitional Assessments will begin in **January 2025**.



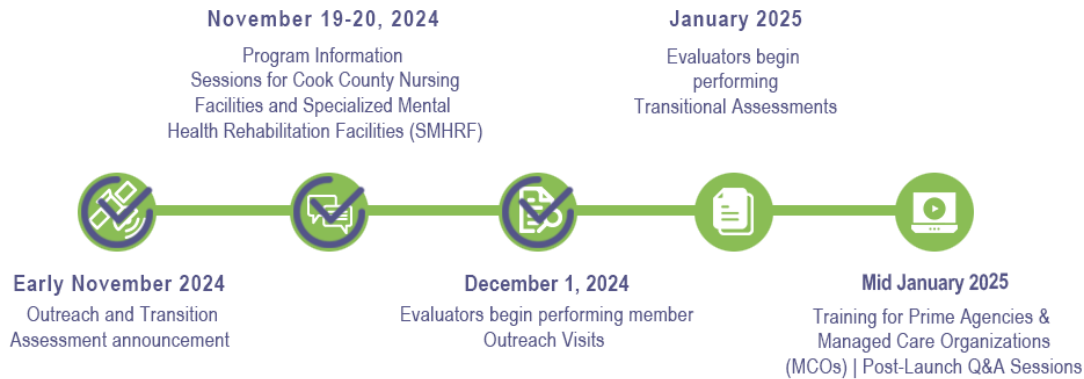
NEXT STEPS: Ensure You're Ready for the Transition

Review the **on-demand training materials** linked below for insights into program processes and take note of the new [web page](#) and dedicated Help Desk account, ILOA@maximus.com, created specifically to support this new service. Please pass this communication along to anyone who may need awareness of this upcoming transition.

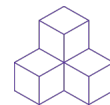
In the coming weeks, additional communications will provide helpful tips, reminders, and transition updates to ensure that program stakeholders

are fully prepped for the planned process changes. We appreciate your ongoing partnership as we work together to ensure that individuals interested in community transition are identified and the levels of support they will need are accurately identified.

Colbert and Williams Consent Decrees Outreach and Transitional Assessment >> Progress Tracker



LEARN MORE: Review On-Demand Information Session



For those who missed this week's **Colbert and Williams Consent Decrees Outreach and Transitional Assessment Information Sessions** or would like to share details with others on your team, please review the helpful on-demand learning video and resource guide below.

- [Outreach and Transitional Assessment Information Session | Recording \(23:54 mins\)](#)
- [Outreach and Transitional Assessment Information Session | Slides](#)

ACTION REQUEST: Bookmark New Tools and Resources Web Page

An important reminder that the new **Colbert and Williams Consent Decrees Outreach and Transitional Assessment Tools and Resources page** was recently launched. Be sure to bookmark the link below and check back often for new program guides and announcements.

- https://maximusclinicalservices.com/svcs/illinois_oa



SUPPORT: Contact the Maximus - Illinois Help Desk

A dedicated email account is now available for the Outreach and Transitional Assessment support. The Maximus – Illinois Help Desk team is available to answer any process or system-related questions from 8:00 a.m. to 8:00 p.m. CST, Sunday – Saturday.

- NEW – Outreach and Transitional Assessment assistance: ILOA@maximus.com

- General Help Desk Assistance: ILHelpDesk@maximus.com
- Phone: 833.727.7745



HFS

Illinois Department of
Healthcare and Family Services
