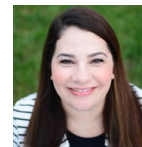




### What is the Supports Intensity Scale for Adults (SIS-A ®) 2nd Edition assessment?

The SIS-A is a standardized assessment that helps inform the Person-Centered Planning process. It also provides OADS with support information for the design of innovative service options through the new Lifespan Waiver.

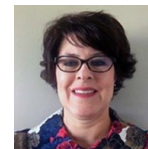


**Julie Long**  
Clinical Management Director



### How does the SIS-A measure support needs?

The SIS assesses the support needs of people with IDD or autism. It has been in use since 2004. The “Adult SIS” (SIS-A®) focuses on what support a person needs to successfully live as independently as possible. Things like taking care of personal needs, working or volunteering, housekeeping, or maintaining relationships and connecting with their community. It also asks about a person’s exceptional medical and/or behavioral support needs. The assessment is done as an interview.

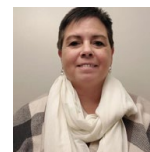


**Lisa Horan**  
Operations Manager



### Who should participate in the SIS-A assessment?

**Who is eligible for a SIS-A?** Persons should be a Section 21 or 29 member or be on the waitlist for these waivers. Youth 16 or older with an Intellectual Developmental Disability (IDD)/Autism diagnosis and/or eligible for MaineCare and expected to transition to Maine adult services program called the Lifespan Waiver are also eligible to receive a SIS-A.



**Donna Umbro**  
Lead Coordinator

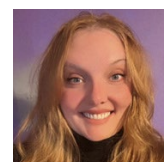
**Who else should attend?** AAIDD requires 2 participants be present for each SIS. It is preferred to include the member, guardians, family, friends, direct support staff from residential, day or other providers. Participants should have known the member for at least 3 months.



### Contact the Maximus Help Desk to schedule a SIS-A assessment:

**How do I schedule a SIS-A assessment?**

Call: 833.771.4639 | Email: [Maine-SIS@maximus.com](mailto:Maine-SIS@maximus.com)



**Becky Chretien**  
Coordinator 1 – Clinical Assessments



### Who performs the SIS-A assessment?

The assessment is done as an interview by a trained interviewer. SIS-A assessments in Maine are managed by State partner, Maximus Inc. on behalf of the Office of Aging and Disability Services (OADS). SIS Assessors have passed a certification process. They have experience working with persons with IDD, including knowledge on how to request and verify information from respondents.



**Siobhan Ahearn**  
Coordinator 1 – Clinical Assessments